

# SUBLEASE

## 1650 ARCH

1650 Arch Street  
Philadelphia, PA 19103

### SITE INFORMATION

- Five Star Onsite Management
- Tenant Conference Center

### LEASE INFORMATION

- \$16.00/SF
- 3,657 RSF
- Suite 1750
- Lease Expires: 07/31/2021
- Available Immediately
- Furniture Negotiable
- Elevator Lobby Exposure
- Concourse Access

**\$1.00/SF SIGNING BONUS TO  
PROCURING BROKER**

*For more information contact:*

**AUSTIN WEINERMAN**  
O: 610.812.1905  
aweinerman@tactix.com

**MICHAEL RABINOWITZ**  
O: 610.812.1905  
mrabinowitz@tactix.com



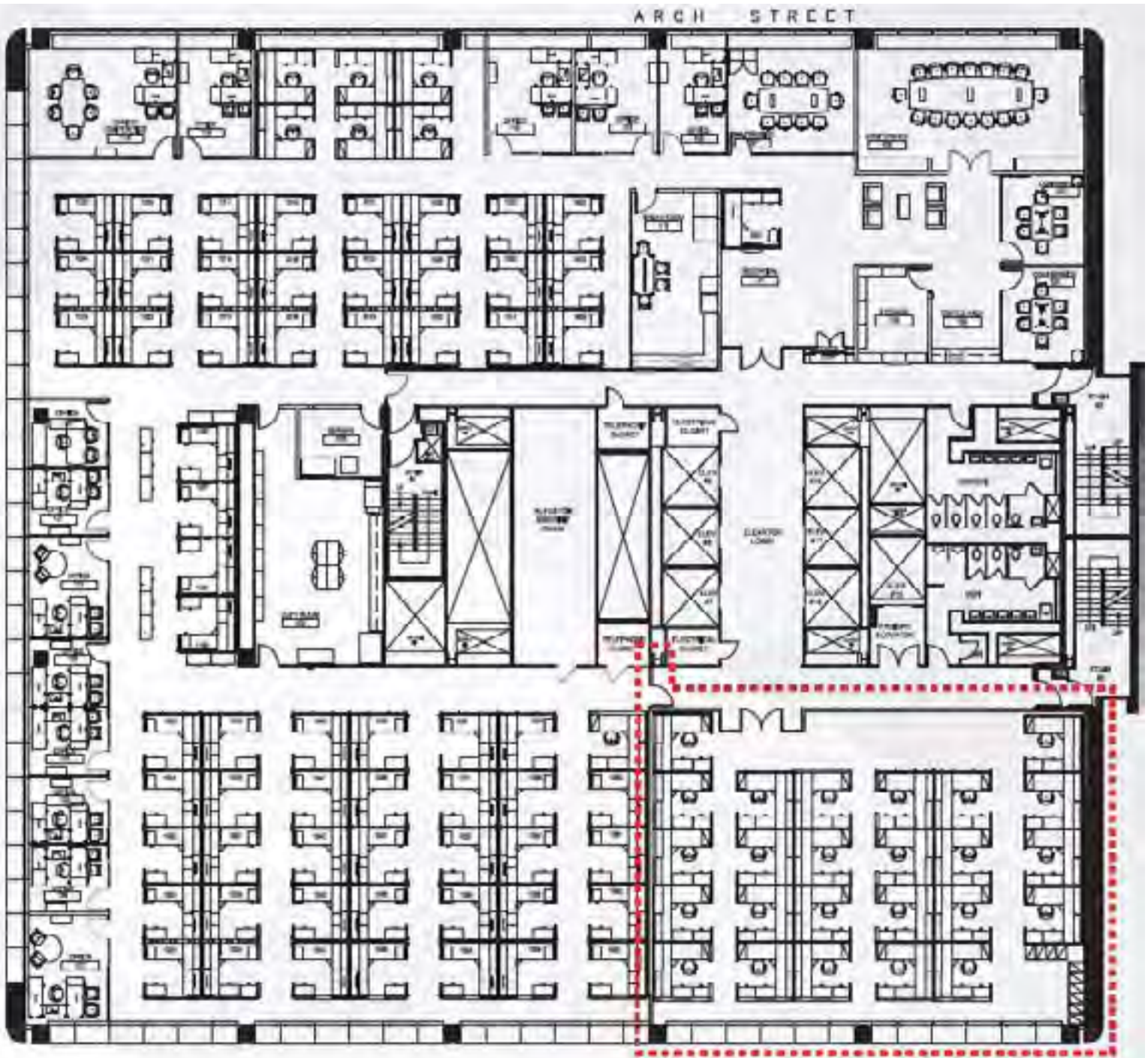
**DAN PATERSON**  
O: 214.365.2738  
danp@swearingen.com

**LUKE PATERSON**  
O: 214.365.2732  
lpateron@swearingen.com

SWEARINGEN REALTY GROUP, L.L.C. | 5950 Berkshire Lane, Suite 500 | Dallas, TX 75225 | 214.365.2700

The information contained herein was obtained from sources believed reliable; however, Swearingen Realty Group, L.L.C. makes no guarantees, warranties, or representations as to the completeness or accuracy thereof. The presentation of this property is submitted subject to errors, omissions, change of price, or conditions, prior sale or lease, or withdrawal without notice.





**SWEARINGEN**  
Est. 1972  
 REALTY GROUP, L.L.C.

**Suite 1750: 3,657 SF**

*For more information contact:*

**AUSTIN WEINERMAN**  
 O: 610.812.1905  
[aweinerman@tactix.com](mailto:aweinerman@tactix.com)

**MICHAEL RABINOWITZ**  
 O: 610.812.1905  
[mravinowitz@tactix.com](mailto:mravinowitz@tactix.com)

**DAN PATERSON**  
 O: 214.365.2738  
[danp@swearingen.com](mailto:danp@swearingen.com)

**LUKE PATERSON**  
 O: 214.365.2732  
[lpateron@swearingen.com](mailto:lpateron@swearingen.com)

SWEARINGEN REALTY GROUP, L.L.C. | 5950 Berkshire Lane, Suite 500 | Dallas, TX 75225 | 214.365.2700

The information contained herein was obtained from sources believed reliable; however, Swearingen Realty Group, L.L.C. makes no guarantees, warranties, or representations as to the completeness or accuracy thereof. The presentation of this property is submitted subject to errors, omissions, change of price, or conditions, prior sale or lease, or withdrawal without notice.