

# SUBLEASE

5800 CAMPUS CIRCLE DRIVE | STE 204A  
IRVING, TX 75063

TRUE "PLUG & PLAY" SPACE



## SITE INFORMATION

**\$** \$14.00/SF + E Effective Rate

Rental Rate

**1,024** RSF

Premises

**9/30/2024**

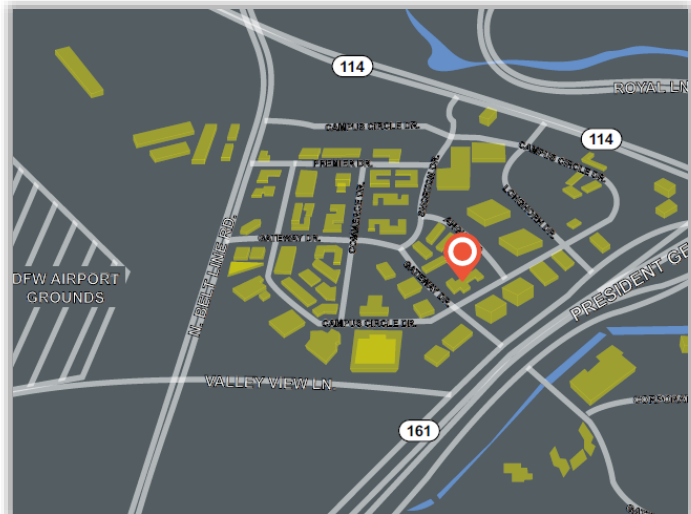
Sublease Expiration

**5/1,000**

Parking

**Immediate  
Occupancy**  
Availability

- Direct lease available. (Terms available upon request).



For more information, contact:

**CAMERON TAPLEY**

C: 214-808-3535

cameront@swearingen.com

**SWEARINGEN**  
Est. 1972  
REALTY GROUP, L.L.C.



## SUBLEASE OVERVIEW

- True “Plug & Play” space
- Space Size: 1,024 RSF
- Lease Rate: \$14.00 plus Electric
- Term: Through September 30, 2024
- Tenant Improvements: As is
- Furniture available (Inventory provided upon request)
- \*Direct lease terms pre-negotiated and available upon request

For more information, contact:

**CAMERON TAPLEY**

C: 214-808-3535

cameront@swearingen.com

[www.swearingen.com](http://www.swearingen.com)

## BUILDING OVERVIEW

- Building and monument signage
- Building Size: 82,942 SF
- Parking Ratio: 5/1,000 SF
- Common patio area with stone walkways and Koi ponds
- Monument signage available
- Complimentary tenant conference room available

SWEARINGEN REALTY GROUP, L.L.C. | 5950 Berkshire Lane, Suite 500 | Dallas, TX 75225 | 214.365.2700

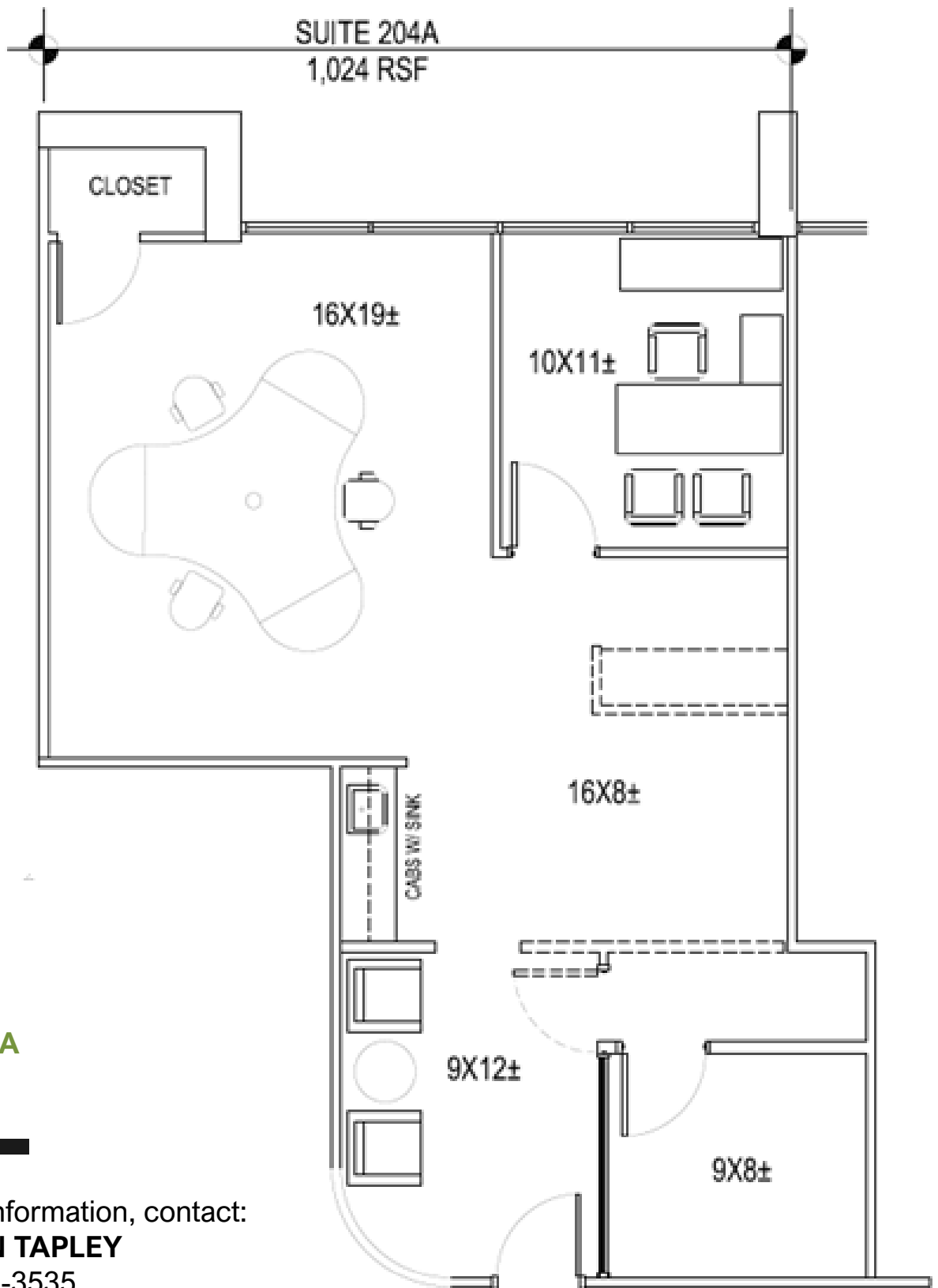
*The information contained herein was obtained from sources believed reliable; however, Swearingen Realty Group, L.L.C. makes no guarantees, warranties, or representations as to the completeness or accuracy thereof. The presentation of this property is submitted subject to errors, omissions, change of price, or conditions, prior sale or lease, or withdrawal without notice.*



**SUITE 204A**  
**1,024 RSF**

For more information, contact:  
**CAMERON TAPLEY**  
C: 214-808-3535  
cameront@swearingen.com

[www.swearingen.com](http://www.swearingen.com)





## Information About Brokerage Services

*Texas law requires all real estate license holders to give the following information about brokerage services to prospective buyers, tenants, sellers and landlords.*

11-2-2015



### TYPES OF REAL ESTATE LICENSE HOLDERS:

- A **BROKER** is responsible for all brokerage activities, including acts performed by sales agents sponsored by the broker.
- A **SALES AGENT** must be sponsored by a broker and works with clients on behalf of the broker.

### A BROKER'S MINIMUM DUTIES REQUIRED BY LAW (A client is the person or party that the broker represents):

- Put the interests of the client above all others, including the broker's own interests;
- Inform the client of any material information about the property or transaction received by the broker;
- Answer the client's questions and present any offer to or counter-offer from the client; and
- Treat all parties to a real estate transaction honestly and fairly.

### A LICENSE HOLDER CAN REPRESENT A PARTY IN A REAL ESTATE TRANSACTION:

**AS AGENT FOR OWNER (SELLER/LANDLORD):** The broker becomes the property owner's agent through an agreement with the owner, usually in a written listing to sell or property management agreement. An owner's agent must perform the broker's minimum duties above and must inform the owner of any material information about the property or transaction known by the agent, including information disclosed to the agent or subagent by the buyer or buyer's agent.

**AS AGENT FOR BUYER/TENANT:** The broker becomes the buyer/tenant's agent by agreeing to represent the buyer, usually through a written representation agreement. A buyer's agent must perform the broker's minimum duties above and must inform the buyer of any material information about the property or transaction known by the agent, including information disclosed to the agent by the seller or seller's agent.

**AS AGENT FOR BOTH - INTERMEDIARY:** To act as an intermediary between the parties the broker must first obtain the written agreement of *each party* to the transaction. The written agreement must state who will pay the broker and, in conspicuous bold or underlined print, set forth the broker's obligations as an intermediary. A broker who acts as an intermediary:

- Must treat all parties to the transaction impartially and fairly;
- May, with the parties' written consent, appoint a different license holder associated with the broker to each party (owner and buyer) to communicate with, provide opinions and advice to, and carry out the instructions of each party to the transaction.
- Must not, unless specifically authorized in writing to do so by the party, disclose:
  - that the owner will accept a price less than the written asking price;
  - that the buyer/tenant will pay a price greater than the price submitted in a written offer; and
  - any confidential information or any other information that a party specifically instructs the broker in writing not to disclose, unless required to do so by law.

**AS SUBAGENT:** A license holder acts as a subagent when aiding a buyer in a transaction without an agreement to represent the buyer. A subagent can assist the buyer but does not represent the buyer and must place the interests of the owner first.

### TO AVOID DISPUTES, ALL AGREEMENTS BETWEEN YOU AND A BROKER SHOULD BE IN WRITING AND CLEARLY ESTABLISH:

- The broker's duties and responsibilities to you, and your obligations under the representation agreement.
- Who will pay the broker for services provided to you, when payment will be made and how the payment will be calculated.

**LICENSE HOLDER CONTACT INFORMATION:** This notice is being provided for information purposes. It does not create an obligation for you to use the broker's services. Please acknowledge receipt of this notice below and retain a copy for your records.

Swearingen Realty Group, LLC	0443604	cparker@swearingen.com	214-365-2700
Licensed Broker /Broker Firm Name or Primary Assumed Business Name	License No.	Email	Phone
Bruce M. Hecht	342820	bhecht@swearingen.com	214-365-2712
Designated Broker of Firm	License No.	Email	Phone
Bruce M. Hecht	342820	bhecht@swearingen.com	214-365-2712
Licensed Supervisor of Sales Agent/ Associate	License No.	Email	Phone
Cameron Tapley	443604	cameront@swearingen.com	214-365-2796
Sales Agent/Associate's Name	License No.	Email	Phone
<div> <div></div> <div></div> <div></div> <div></div> </div>		<div> <div></div> <div></div> <div></div> <div></div> </div>	
Buyer/Tenant/Seller/Landlord Initials		Date	

Regulated by the Texas Real Estate Commission

Information available at [www.trec.texas.gov](http://www.trec.texas.gov)

IABS 1-0

SWEARINGEN REALTY GROUP, L.L.C. | 5950 Berkshire Lane, Suite 500 | Dallas, TX 75225 | 214.365.2700

*The information contained herein was obtained from sources believed reliable; however, Swearingen Realty Group, L.L.C. makes no guarantees, warranties, or representations as to the completeness or accuracy thereof. The presentation of this property is submitted subject to errors, omissions, change of price, or conditions, prior sale or lease, or withdrawal without notice.*

